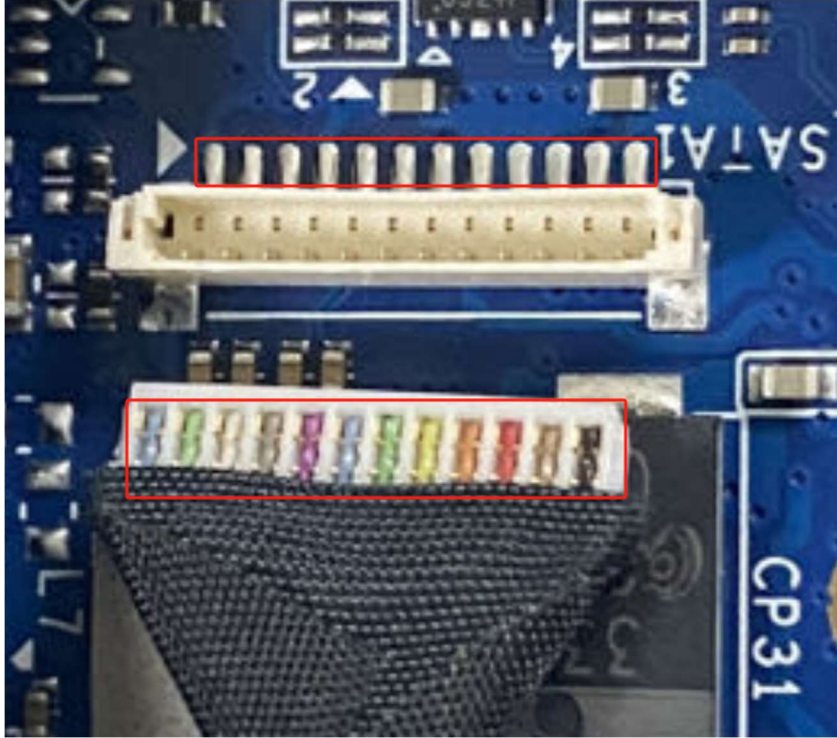
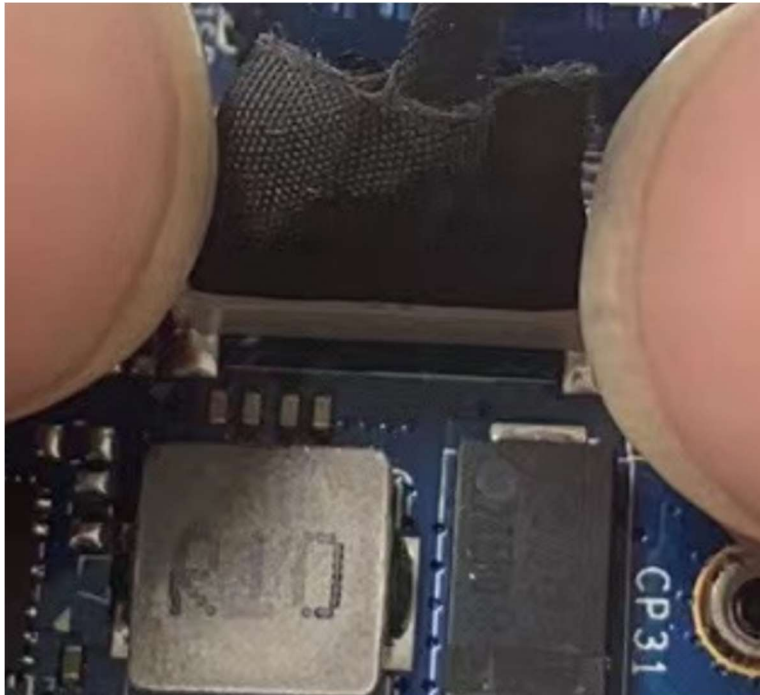


Install the SATA cable with the SSD

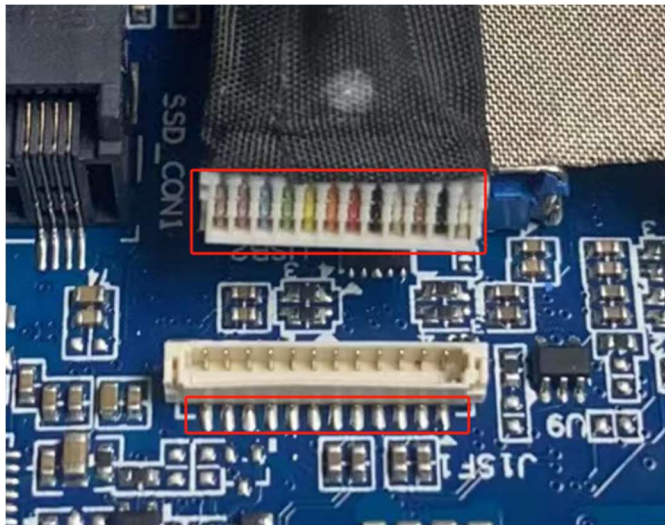
The side of the SATA cable with a colored stripe should align with the 12-pin connector on the motherboard, as shown in the red box in the diagram below (using B95/B100 as an example).



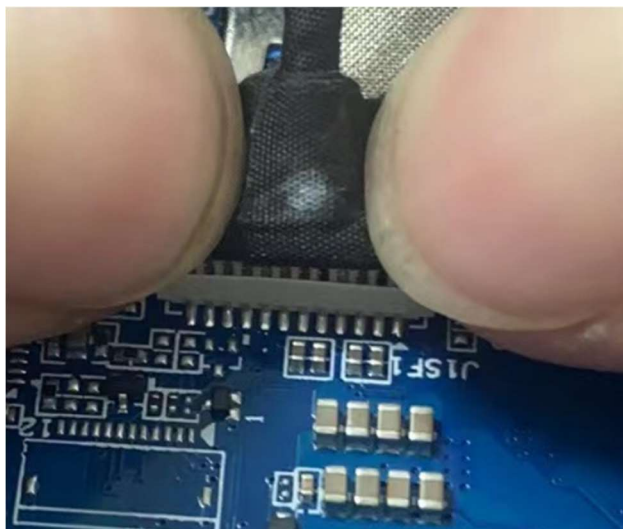
Insert the connector vertically and apply gentle downward pressure on both sides simultaneously (taking care not to shake it).



The side of the SATA cable with a colored stripe should align with the 12-pin connector on the motherboard, as shown in the red box in the diagram below (using P1/U56/U58 as an example).



Insert the connector vertically and apply gentle downward pressure on both sides simultaneously (taking care not to shake it).



Connect the SATA cable to the 2.5-inch SSD.



Install SSD

